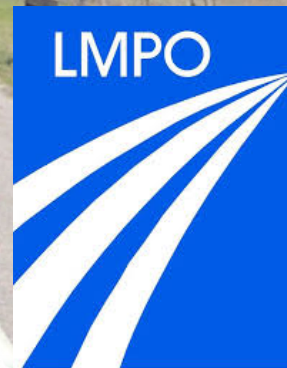
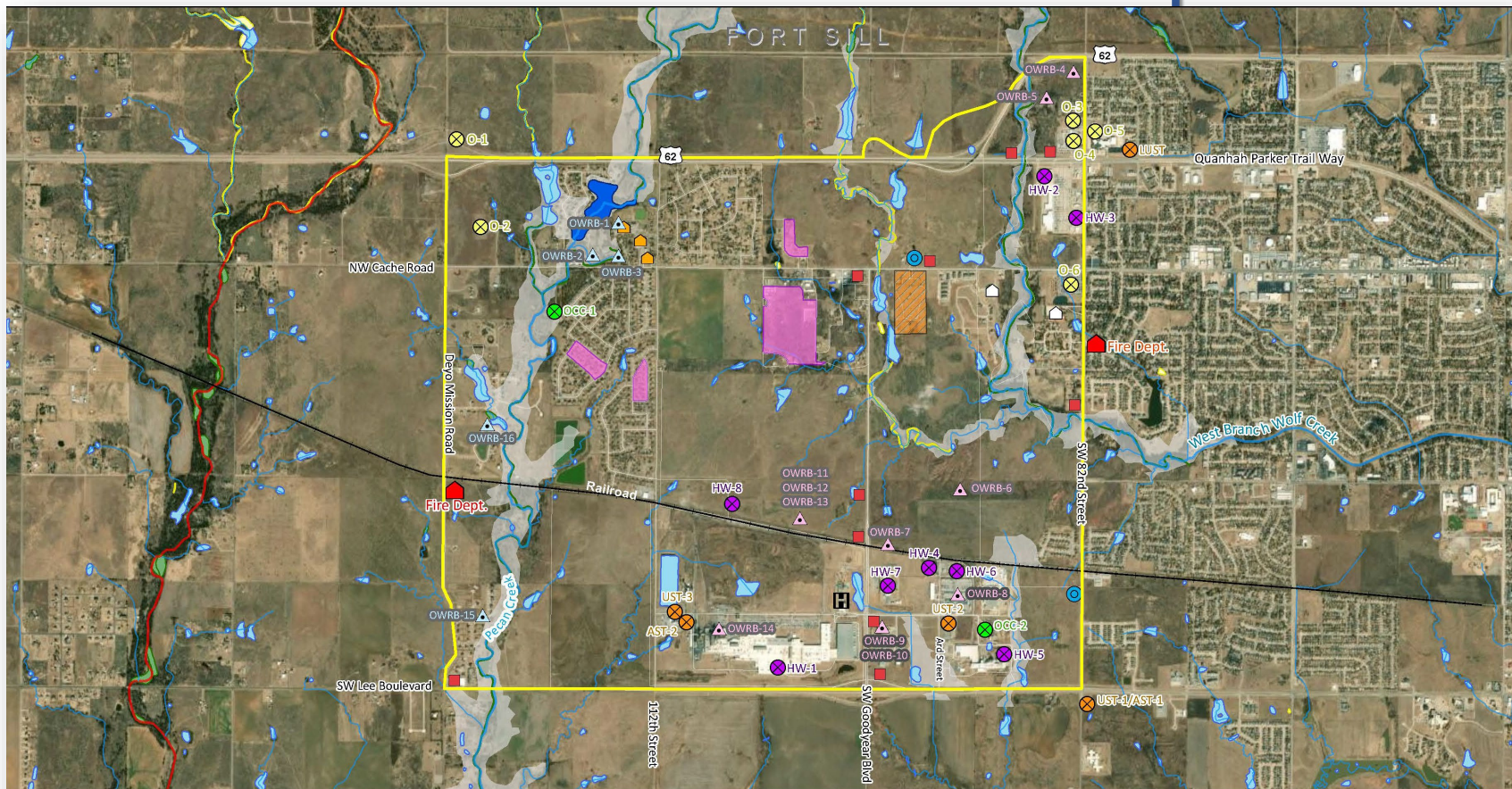




Conceptual Alignment and Feasibility Report for an Extension of Goodyear Blvd. from the West Lawton Industrial Park to US-62



Study Area & Environmental Constraints Map



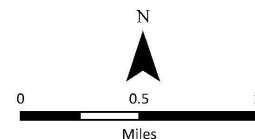
Please note: the following were not identified in the study area: likely suitable habitat for Bald & Golden Eagles, mapped historic resources, and EJ block groups for low income

Legend

Study Area	Groundwater Well	Railroad	EJ Census Block	NWI Wetlands
HazWaste Site	Monitoring Well	Cemetery	Emergent Wetland	Forested/Shrub Wetland
Other Site	Medical Center	Impaired Water (2014)	Pond	Lake
Tanks	Schools	NHD Flowline	FEMA Floodplain	
Active Oil Well	Place of Worship			
Billboard	Water Tower			

ENVIRONMENTAL CONSTRAINTS MAP

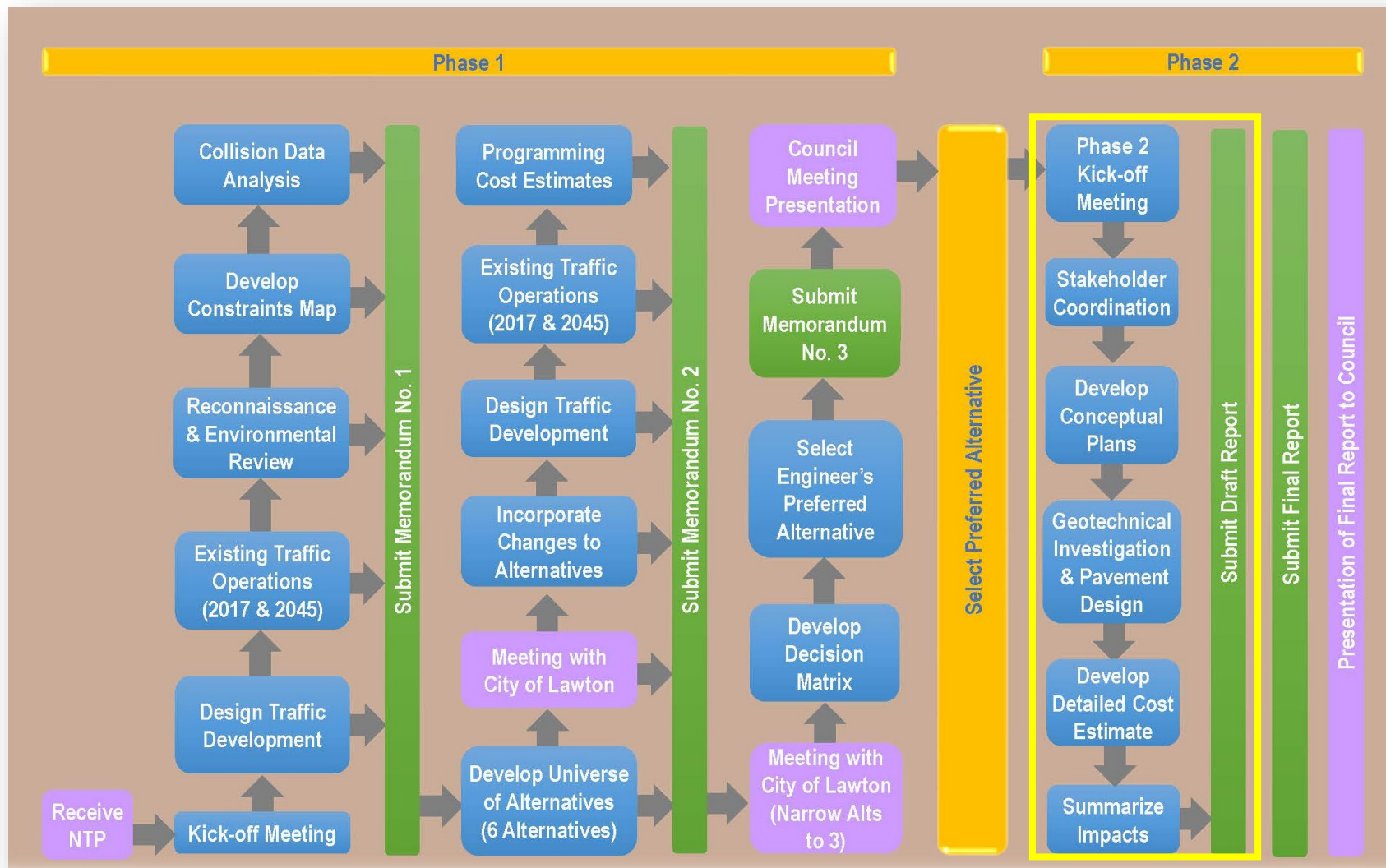
Conceptual Alignment and Feasibility Study:
Extension of Goodyear Blvd. from W. Lawton
Industrial Park to US Highway 62



EST
Comprehensive Engineering Services
Date: 11/11/2020


Experienced Professionals | Innovative Solutions

Project Scope

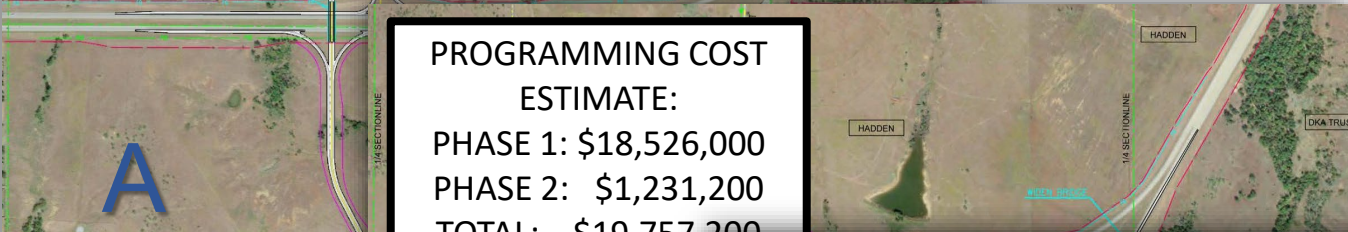


Experienced Professionals | Innovative Solutions

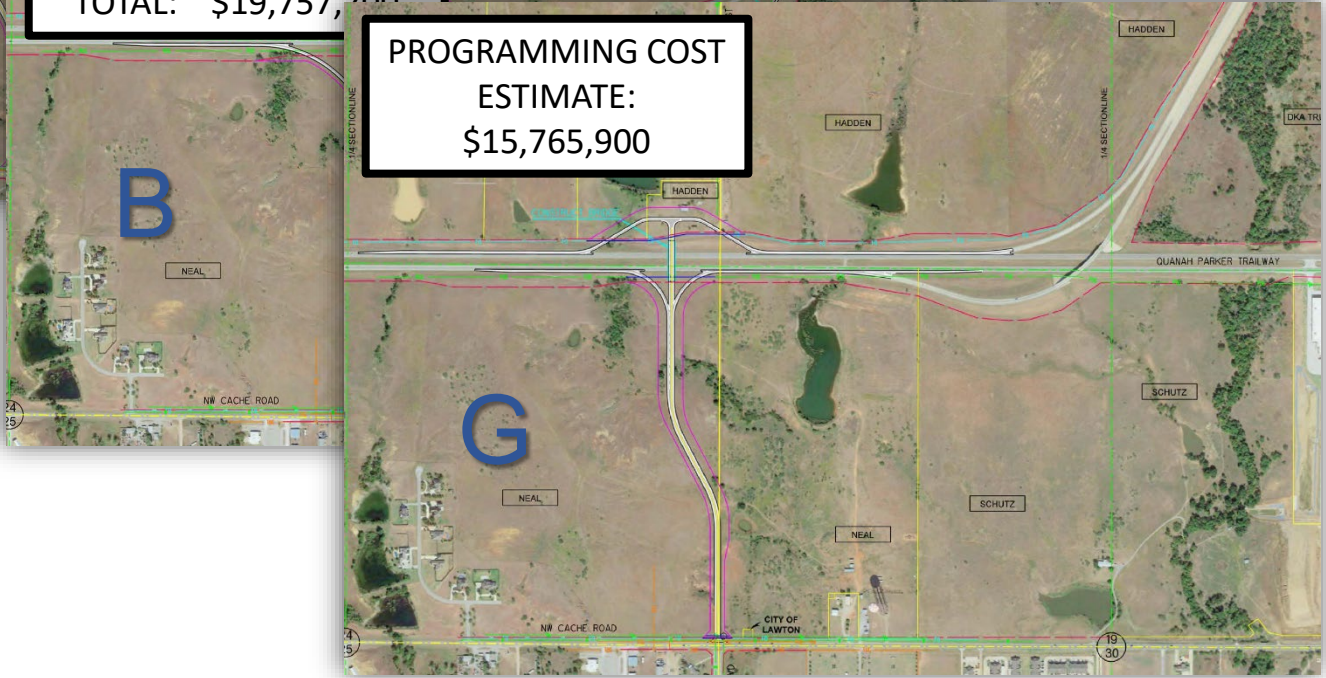
Stakeholder Coordination



PROGRAMMING COST
ESTIMATE:
\$15,106,700



PROGRAMMING COST
ESTIMATE:
PHASE 1: \$18,526,000
PHASE 2: \$1,231,200
TOTAL: \$19,757,200



PROGRAMMING COST
ESTIMATE:
\$15,765,900

Experienced Professionals | Innovative Solutions

Geotechnical Report

GEOTECHNICAL ENGINEERING SERVICES REPORT

GOODYEAR BOULEVARD EXTENSION
FROM NW CACHE ROAD TO U.S. HIGHWAY 62
WITH ASSOCIATED RAMPS
LAWTON, OKLAHOMA

Prepared For:
City of Lawton

Prepared By:
EST, Inc.



Approved by:

Bryce R. Hanlon, P.E.
Geotechnical Engineer
bryceh@estinc.com



EST PROJECT NUMBER
60-10332

September 22, 2021

Experienced Professionals | Innovative Solutions

Geotechnical Report



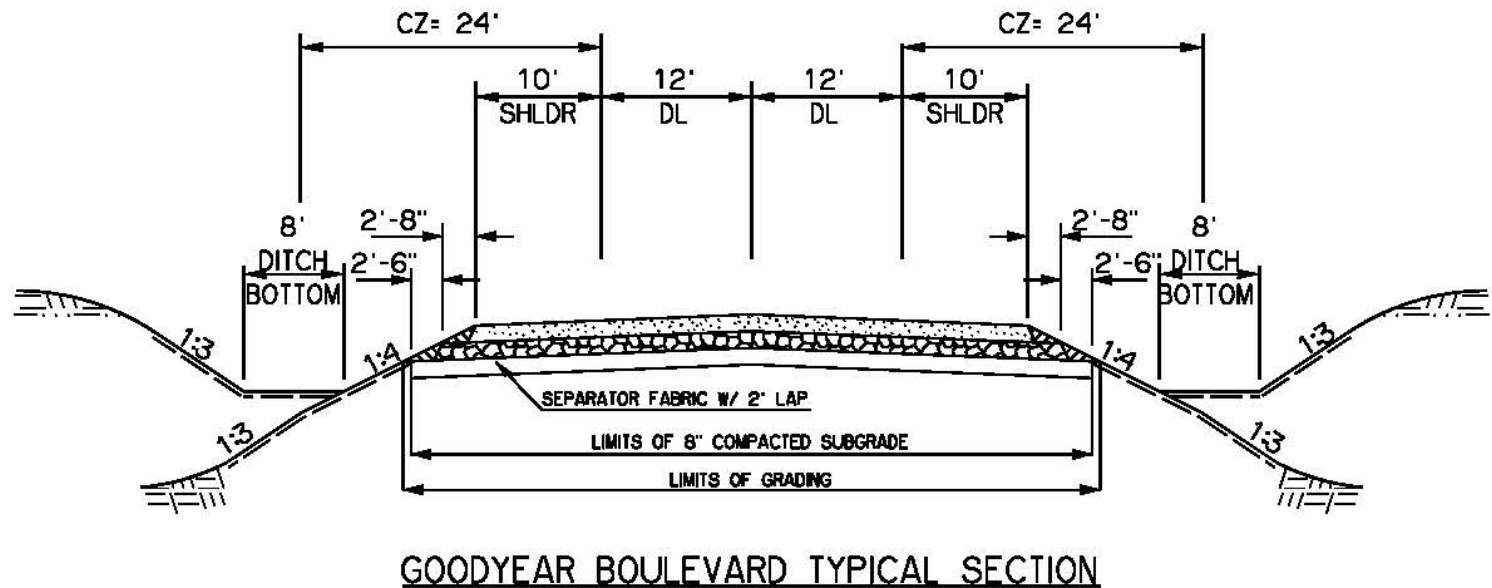
Experienced Professionals | Innovative Solutions

Geotechnical Report

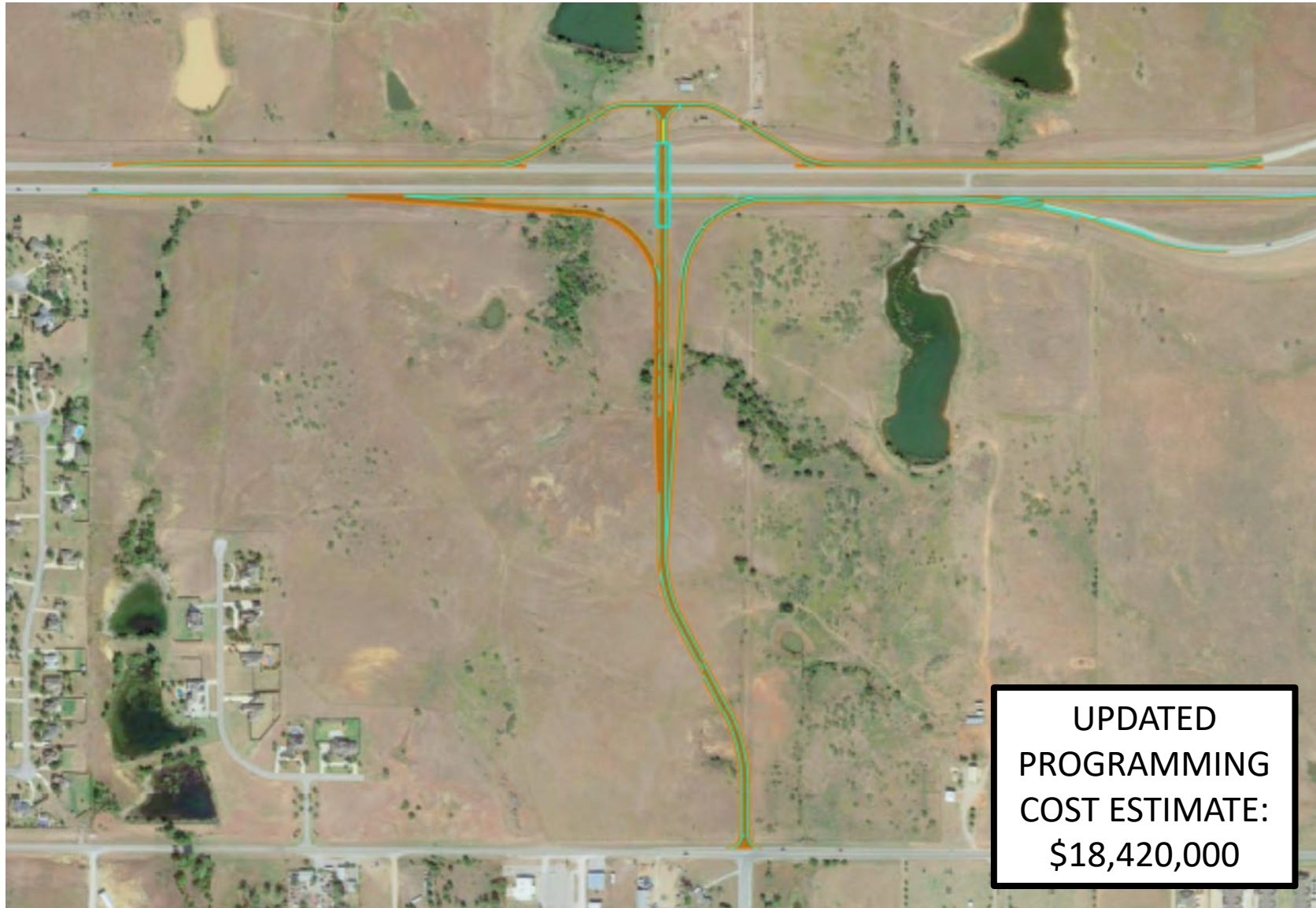
**GOODYEAR BLVD. EXTENSION FROM NW CACHE ROAD, EXTENDING 1/2 MILE NORTH TO US-62
AND ASSOCIATED RAMPS AT US-62
RECOMMENDED PAVEMENT SECTION
(ESTIMATED DESIGN LIFE OF 20 YEARS)**

2" Superpave Type 'S4' Asphalt Concrete (PG 70-28OK)
over
3" Superpave Type 'S3' Asphalt Concrete (PG 64-22OK or PG 70-28OK)
over
3" Superpave Type 'S3' Asphalt Concrete (PG 64-22OK)
over
8" ODOT Type "A" Aggregate Base
(Compacted to 98% Std. Proctor)
over
AASHTO M288 "Separation Geotextile Property Requirements" Class 2 non-woven Fabric (max AOS of 0.25)
over
Minimum of 8" of Compacted Subgrade
(Compacted to 95% Std. Proctor)

Conceptual Plans



Option G – Preferred Option



UPDATED
PROGRAMMING
COST ESTIMATE:
\$18,420,000

Experienced Professionals | Innovative Solutions