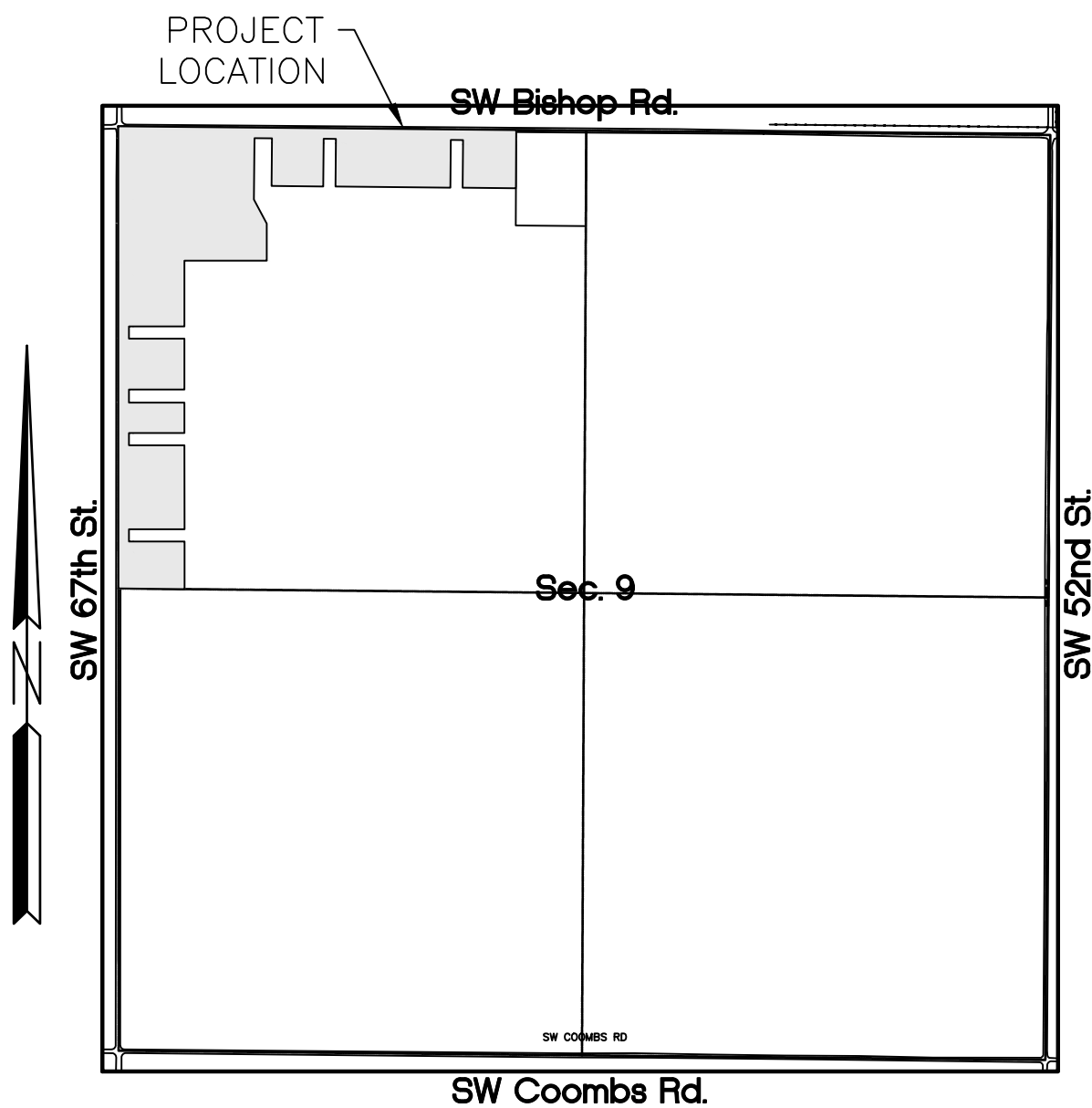


# Prairie Acres, Part 1

## An Addition to the City of Lawton

### Located in Section 9, T1N-R12W, I.M.

### Comanche County, Oklahoma



**KEY MAP**  
Scale 1" = 1000'

#### Monuments and Permanent Markers

- ▲ Type "B" Marker, 3/4" iron pin set in concrete
- Type "C" Marker, 1/2" iron pin at all lot corners, points of curvature and tangency of all inside and outside right-of-way lines, 3/4 inch iron pins on all block corners.

#### CITY PLANNING COMMISSION APPROVAL

I, \_\_\_\_\_, Chairman of the CPC for the City of Lawton, County of Comanche, State of Oklahoma, hereby certify that the said Commission duly approved the above foregoing annexed plat on this \_\_\_\_ day of \_\_\_\_\_, 2025.

ATTEST:

Chairman

Secretary

#### CERTIFICATE OF CITY CLERK

I, Donalynn Blazek-Scherler, City Clerk of the City of Lawton, State of Oklahoma, hereby certify that I have examined the records of the said City and find that all deferred payments or unmatured installments upon special assessments have been paid in full and there is no special assessment procedure pending against the land shown on the above foregoing annexed plat except: NONE

on this \_\_\_\_ day of \_\_\_\_\_, 2025.

City Clerk

NW Cor., NW¼,  
Sec. 9-T1N-R12W, I.M.,  
Comanche County, OK  
(Mag nail found)

NE¼, NE¼, NE¼  
Sec. 8-T1N-R12W, I.M.,  
Comanche County, OK  
Kenneth & Ronda R.  
Williams Rev. Trust

SE¼, NE¼, NE¼  
Sec. 8-T1N-R12W, I.M.,  
Comanche County, OK  
Jarrod & Lindsey Dewolf

NE¼, SE¼, NE¼  
Sec. 8-T1N-R12W, I.M.,  
Comanche County, OK  
Broadco Incorporated

SE¼, SE¼, NE¼  
Sec. 8-T1N-R12W, I.M.,  
Comanche County, OK  
Matthew K & Pamela S.  
Stottmann

SW Cor., NW¼,  
(60d nail set)

Signed \_\_\_\_\_

Date \_\_\_\_\_

#### DEQ CERTIFICATE

The Department of Environmental Quality certifies that all lots in this plat are approved for Public Water Supply (existing). Lot 7, Block 1 is approved for the use of Public Sanitary Sewer (existing) and all remaining lots are approved for the construction of private sewage disposal systems.

R.P.S.

#### ACCEPTANCE OF DEDICATION BY CITY COUNCIL

Be it resolved by the City Council, City of Lawton, Oklahoma, that the dedications shown on the above foregoing annexed plat are hereby accepted. Adopted by the City Council, the City of Lawton, Oklahoma, this \_\_\_\_ day of \_\_\_\_\_, 2025. Approved by the Mayor of the City of Lawton, Oklahoma this \_\_\_\_ day of \_\_\_\_\_, 2025.

Mayor

City Clerk

#### COUNTY CLERK

State of Oklahoma) SS  
County of Comanche)

This instrument was filed on this \_\_\_\_ day of \_\_\_\_\_, 2025 A.D. at \_\_\_\_ (am/pm), and duly recorded in Book \_\_\_\_\_, Page \_\_\_\_\_

County Clerk

#### OWNERS CERTIFICATE AND DEDICATION

KNOW ALL MEN BY THESE PRESENTS: That 24-Lawton-155, LLC being the sole owner in fee simple of the following described real property to wit:

A tract of land located in the Northwest Quarter of Section 9, Township 1-N, Range 12-W, of the Indian Meridian, Comanche County, Oklahoma;  
Beginning at the Northwest Corner of the Northwest Quarter of Section 9, Township 1-N, Range 12-W, of the Indian Meridian, Comanche County, Oklahoma;  
THENCE S89°27'52"E a distance of 2271.81 feet on the North line of said Northwest Quarter, point being 400 feet from the Northeast Corner of said Northwest Quarter;  
THENCE S00°16'05"W a distance of 332.00 feet parallel with the East line of said Northwest Quarter;  
THENCE N89°27'52"W a distance of 304.36 feet parallel with the North line of said Northwest Quarter;  
THENCE N00°32'08"E a distance of 272.00 feet;  
THENCE N89°27'52"W a distance of 70.00 feet parallel with the North line of said Northwest Quarter;  
THENCE S00°32'08"W a distance of 272.00 feet;  
THENCE N89°27'52"W a distance of 656.00 feet parallel with the North line of said Northwest Quarter;  
THENCE N00°32'08"E a distance of 272.00 feet;  
THENCE N89°27'52"W a distance of 70.00 feet parallel with the North line of said Northwest Quarter;  
THENCE S00°32'08"W a distance of 272.00 feet;  
THENCE N89°27'52"W a distance of 295.00 feet parallel with the North line of said Northwest Quarter;  
THENCE N00°32'08"E a distance of 272.00 feet;  
THENCE N89°27'52"W a distance of 100.00 feet parallel with the North line of said Northwest Quarter;  
THENCE S00°32'08"W a distance of 350.00 feet;  
THENCE S27°56'07"E a distance of 155.94 feet;  
THENCE S00°01'09"E a distance of 211.71 feet parallel with the West line of said Northwest Quarter;  
THENCE S89°58'51"W a distance of 470.00 feet;  
THENCE S00°01'09"E a distance of 375.00 feet parallel with the West line of said Northwest Quarter;  
THENCE S89°58'51"W a distance of 317.00 feet;  
THENCE S00°01'09"E a distance of 70.00 feet parallel with the West line of said Northwest Quarter;  
THENCE N89°58'51"E a distance of 317.00 feet;  
THENCE S00°01'09"E a distance of 290.00 feet parallel with the West line of said Northwest Quarter;  
THENCE S89°58'51"W a distance of 317.00 feet;  
THENCE S00°01'09"E a distance of 75.00 feet parallel with the West line of said Northwest Quarter;  
THENCE N89°58'51"E a distance of 317.00 feet;  
THENCE S00°01'09"E a distance of 173.00 feet parallel with the West line of said Northwest Quarter;  
THENCE S89°58'51"W a distance of 317.00 feet;  
THENCE S00°01'09"E a distance of 70.00 feet parallel with the West line of said Northwest Quarter;  
THENCE N89°58'51"E a distance of 317.00 feet;  
THENCE S00°01'09"E a distance of 479.00 feet parallel with the West line of said Northwest Quarter;  
THENCE S89°58'51"W a distance of 317.00 feet;  
THENCE S00°01'09"E a distance of 70.00 feet parallel with the West line of said Northwest Quarter;  
THENCE N89°58'51"E a distance of 317.00 feet;  
THENCE S00°01'09"E a distance of 271.88 feet parallel with the West line of said Northwest Quarter to the South line of said Northwest Quarter;  
THENCE N89°26'38"W a distance of 377.02 feet on the south line of said Northwest Quarter to the Southwest Corner of said Northwest Quarter;  
THENCE N00°01'09"W a distance of 2637.11 feet on the West line of said Northwest Quarter to the Point of Beginning containing 38.07 acres more or less.

Hereby dedicates to the public use all streets and avenues as shown on the annexed plat of Prairie Acres, Part 1, to the City of Lawton, Comanche County, Oklahoma. For the purpose of providing an orderly development of Prairie Acres, Part 1, to the City of Lawton Oklahoma it does hereby provide restrictive covenants filed in Book \_\_\_\_\_, Page \_\_\_\_\_, of the records in the office of the County Clerk, Comanche County, Oklahoma.

Witness my hand  
this \_\_\_\_ day of \_\_\_\_\_, 2025.

Managing Member

Chad Brinson

State of Oklahoma) SS  
County of Comanche)

This Foregoing instrument was acknowledged before me  
this \_\_\_\_ day of \_\_\_\_\_, 2025.

Notary Public

My Commission Expires: \_\_\_\_\_

My Commission Number: \_\_\_\_\_

#### COUNTY TREASURER'S CERTIFICATE

I, Rhonda Brantley, do hereby certify that I am the duly elected, qualified and acting County Treasurer of Comanche County, State of Oklahoma, and that the tax records of the said county show all taxes are paid for the year \_\_\_\_ and prior years on the land shown on the above foregoing plat located in Comanche County, Oklahoma.

In witness whereof, said County Treasurer has caused this instrument to be executed at Lawton, Oklahoma on this \_\_\_\_ day of \_\_\_\_\_, 2025.

County Treasurer

#### COUNTY CLERK

State of Oklahoma) SS  
County of Comanche)

I, Carrie Tubbs, County Clerk of Comanche County, Oklahoma, do hereby certify that this is a true and correct copy of a like instrument as appears on record in this office on this \_\_\_\_ day of \_\_\_\_\_, 2025.

County Clerk