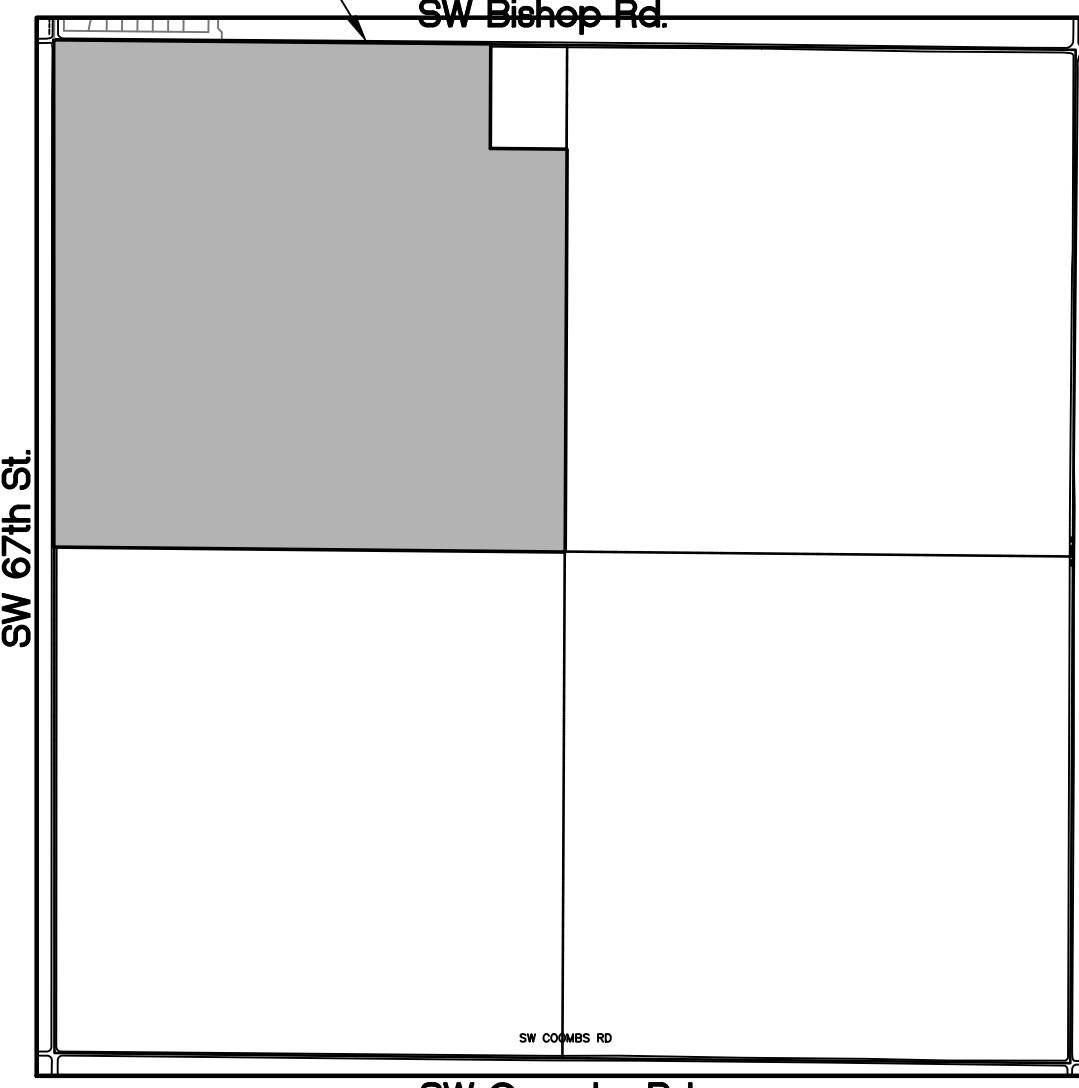


Tract acreage based on 60' ROW

- Tract 1 - 1.87 Acres
- Tract 2 - 2.37 Acres
- Tract 3 - 1.51 Acres
- Tract 4 - 1.84 Acres
- Tract 5 - 3.75 Acres
- Tract 6 - 4.95 Acres
- Tract 7 - 2.05 Acres
- Tract 8 - 2.05 Acres
- Tract 9 - 4.95 Acres
- Tract 10 - 7.93 Acres
- Tract 11 - 1.90 Acres
- Tract 12 - 6.26 Acres
- Tract 13 - 2.73 Acres
- Tract 14 - 4.68 Acres
- Tract 15 - 3.76 Acres
- Tract 16 - 2.11 Acres
- Tract 17 - 1.26 Acres
- Tract 18 - 3.41 Acres
- Tract 19 - 5.71 Acres
- Tract 20 - 1.26 Acres
- Tract 21 - 2.23 Acres
- Tract 22 - 4.25 Acres
- Tract 23 - 5.60 Acres
- Tract 24 - 1.97 Acres
- Tract 25 - 69.31 Acres

PROJECT LOCATION



**KEY MAP**  
Scale 1" = 1000'

Additional Notes

1. Soil Types Vary:  
 FtB (Foard and Tillman soils) 1%-3% slopes  
 Br (Broken Alluvial land)  
 VeC (Vernon soils, 3% - 5% slopes)  
 VeD (Vernon soils, 5% - 12% slopes)
2. Utilities: New Public Water with Fire Hydrants will be added as indicated. (To be on Construction Plat)
3. All Lots will have Private Sewer approved by Local DEQ
4. Stormwater runoff will be natural. Each Lot will be responsible for Detention.
5. Building Limit Lines and Easements will be provided on the Record Plat.

No.	Date	Revision

Prairie Acres Section 9, T1N-R12W, I.M. Comanche County, Oklahoma	OK CA# 2075 Tel. (580) 397-6022 <b>Engineering</b>
---	--

SHEET TITLE Development Sketch	DATE 11/8/24
PROJECT NO. 24dev05	SHEET NO. OF 1 1

Copyright (c) 2024 by Landmark Engineering