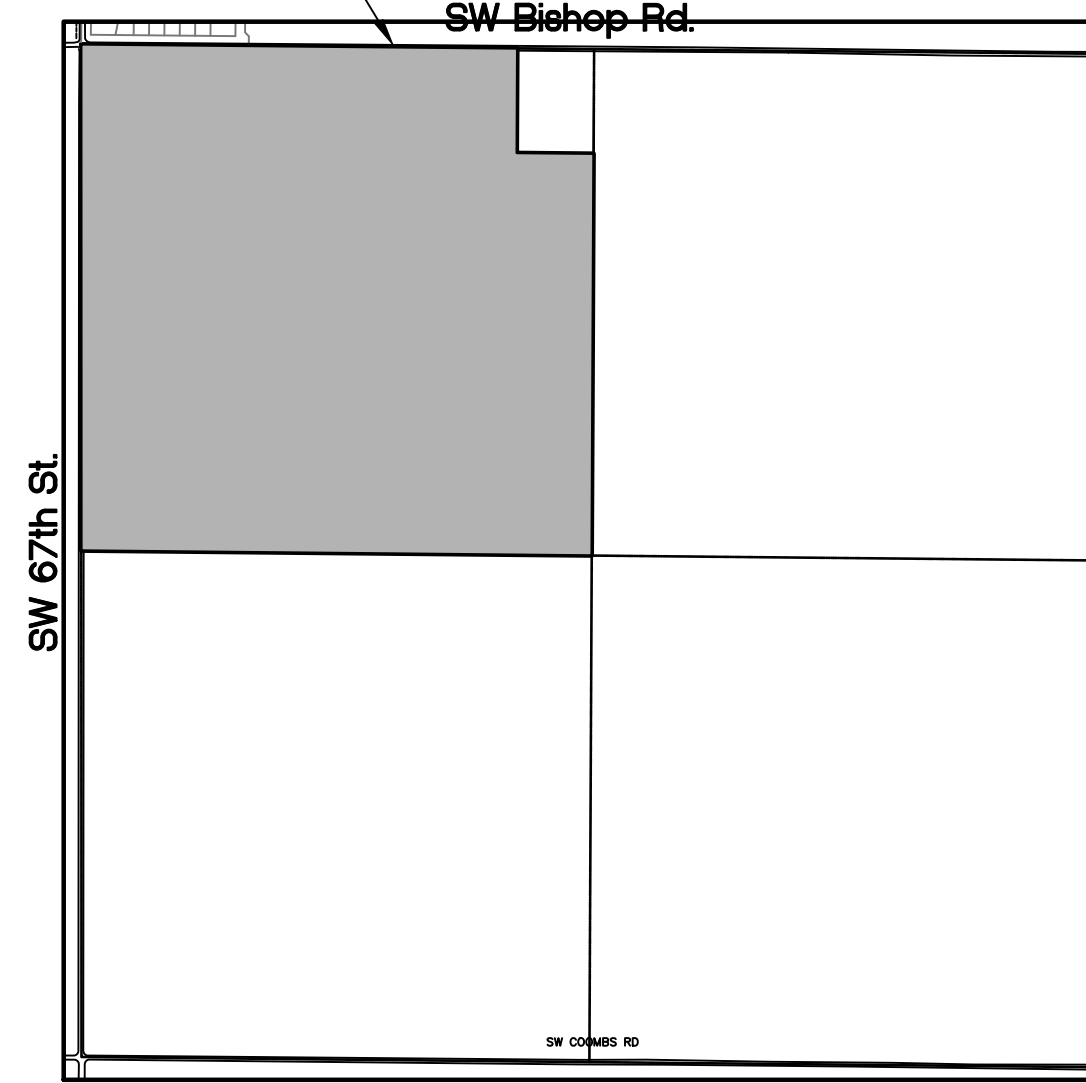


Tract acreage based on 60' ROW

Tract 1	1.87 Acres
Tract 2	2.37 Acres
Tract 3	1.51 Acres
Tract 4	1.84 Acres
Tract 5	3.75 Acres
Tract 6	4.95 Acres
Tract 7	2.05 Acres
Tract 8	2.05 Acres
Tract 9	4.95 Acres
Tract 10	7.93 Acres
Tract 11	1.90 Acres
Tract 12	6.26 Acres
Tract 13	2.73 Acres
Tract 14	4.68 Acres
Tract 15	3.76 Acres
Tract 16	2.11 Acres
Tract 17	1.26 Acres
Tract 18	3.41 Acres
Tract 19	5.71 Acres
Tract 20	1.26 Acres
Tract 21	2.23 Acres
Tract 22	4.25 Acres
Tract 23	5.60 Acres
Tract 24	1.97 Acres
Tract 25	69.31 Acres

PROJECT LOCATION



KEY MAP
Scale 1" = 1000'

Additional Notes

- Soil Types Vary:
FtB (Foard and Tillman soils) 1%-3% slopes
Br (Broken Alluvial land)
VeC (Vernon soils, 3% - 5% slopes)
VeD (Vernon soils, 5% - 12% slopes)
- Utilities: New Public Water with Fire Hydrants will be added as indicated. (To be on Construction Plat)
- All Lots will have Private Sewer approved by Local DEQ
- Stormwater runoff will be natural. Each Lot will be responsible for Detention.
- Building Limit Lines and Easements will be provided on the Record Plat.

OK CA# 2075 Tel. (800) 397-6222 2552 N.E. SATELITE PARKWAY, DAWSON, OK 74737 H. Lester Steiger, P.E., P.L.S.	Revision	Date	No.
Engineering	Revision	Date	No.
Landmark	Prairie Acres		
	Section 9, T1N-R12W, I.M.		
	Comanche County, Oklahoma		
SHEET TITLE	Development Sketch		
DATE	11/8/24		
PROJECT NO.	24dev05		
SHEET NO.	1	OF	1